

Uga, Va'ai Fa'alelei



Tusi tala: Lee Noto
Tusi ata: Lori Phillips

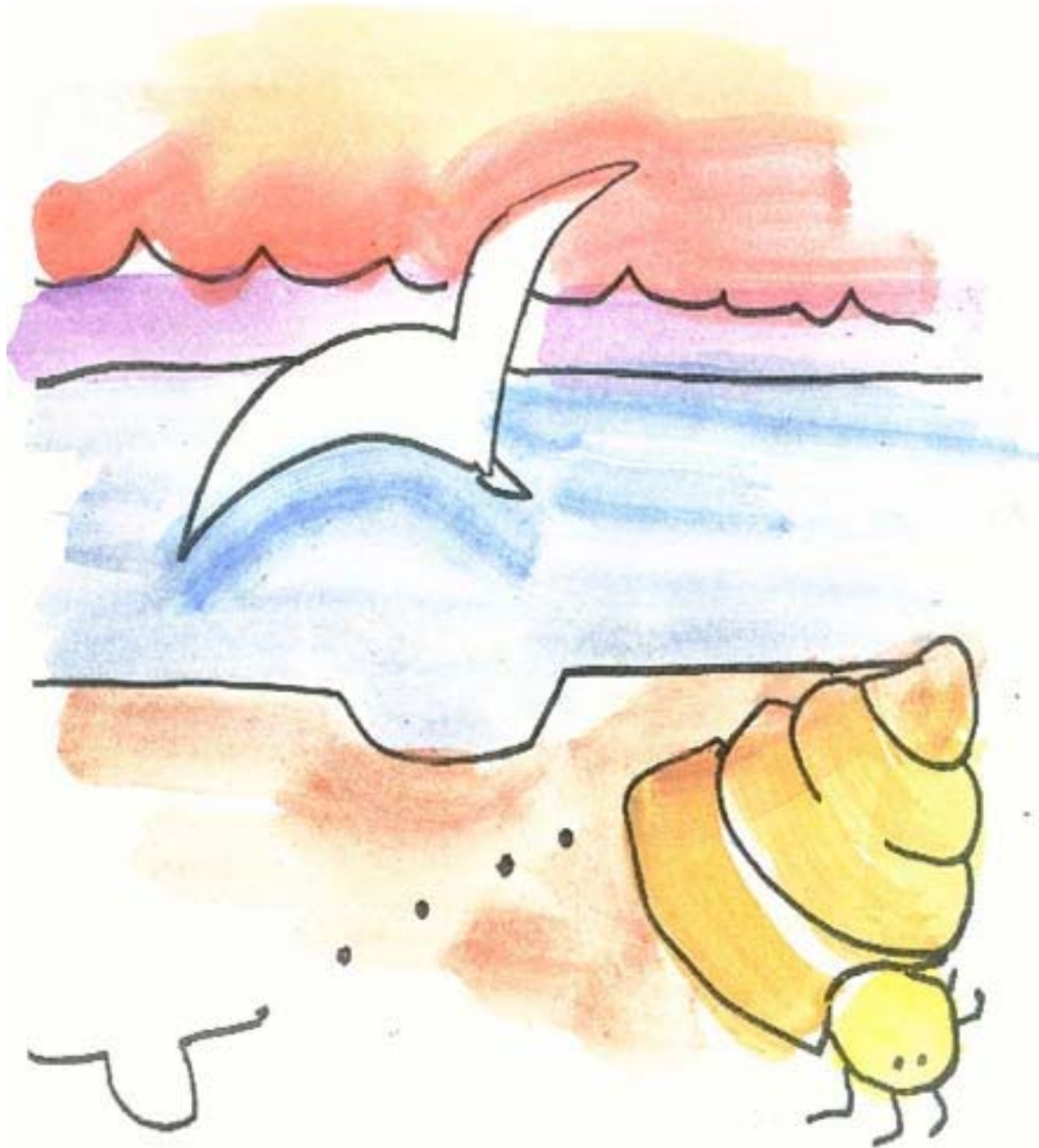


Sa tolotolo lemu a'e le uga i luga ma lalo o le matafaga.

Sa ia 'eli lona 'auala i totonu ma fafo o le pu oneone.



Sa lele mai se manulele lapo'a i luga a'e o le matafaga ua fia ai tele. Sa va'ai atu i le uga o lo'o tolotolo i totonu ma tolotolo i fafo o le pu oneone. Sa manatu ane, E! se'i o'u fa'atalitali la'itiiti 'aua o lea o le'a manaia la'u mea'ai i le aoauli.



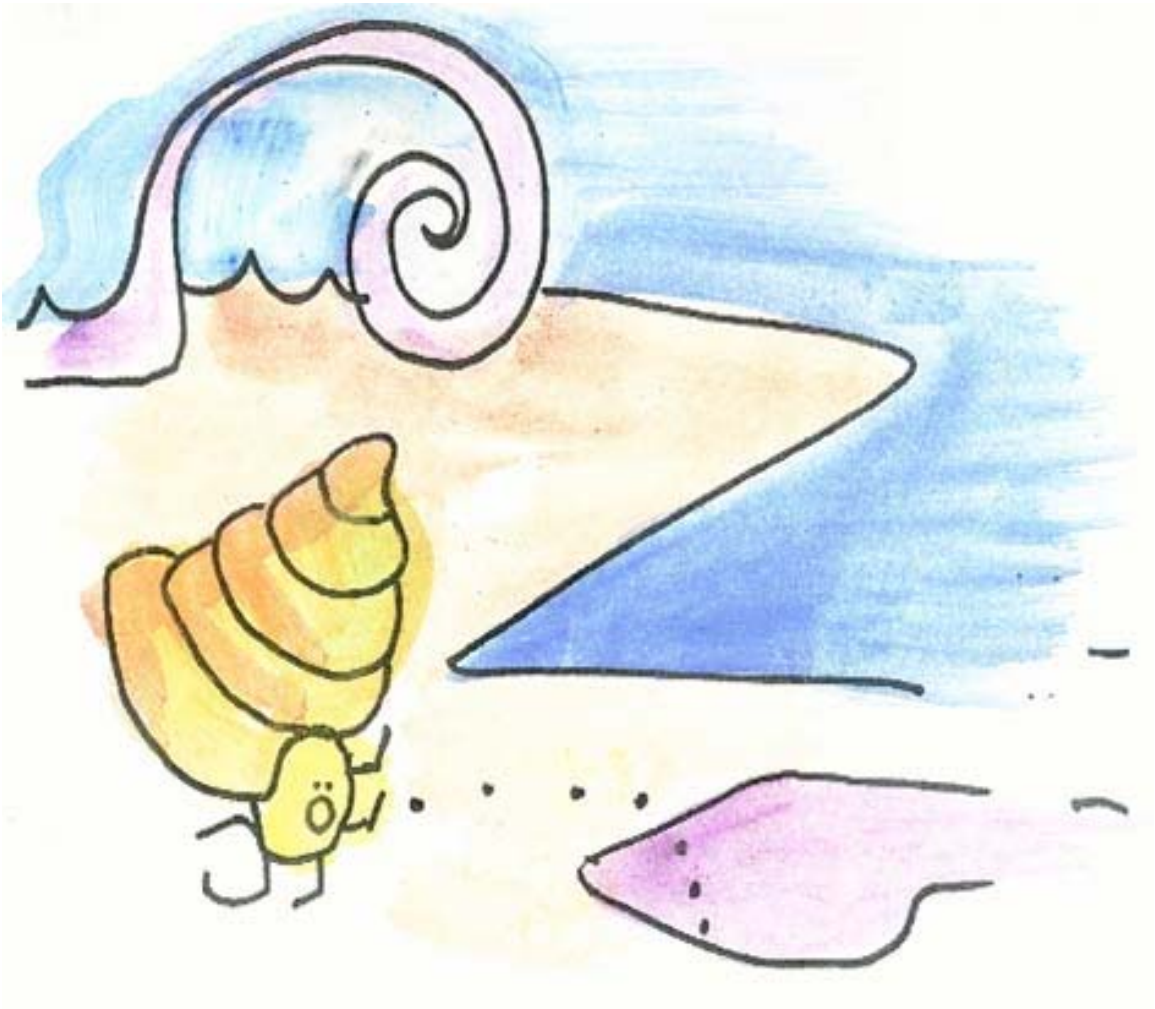
Ua sau le uga i fafo o le pu ma tolotolo solo i le matafaga.
Sa le iloa e ia le manulele o loo i luga a'e o ia. Sa fa'avave
ona fa'atifa mai i lalo le manulele.

Uga, va'ai fa'alelei!



Sa alu fa'avave le Uga i totonu o le pu oneone. Sa le fiafia le manulele ma ua lele 'ese.

Ua saogalemu le Uga.



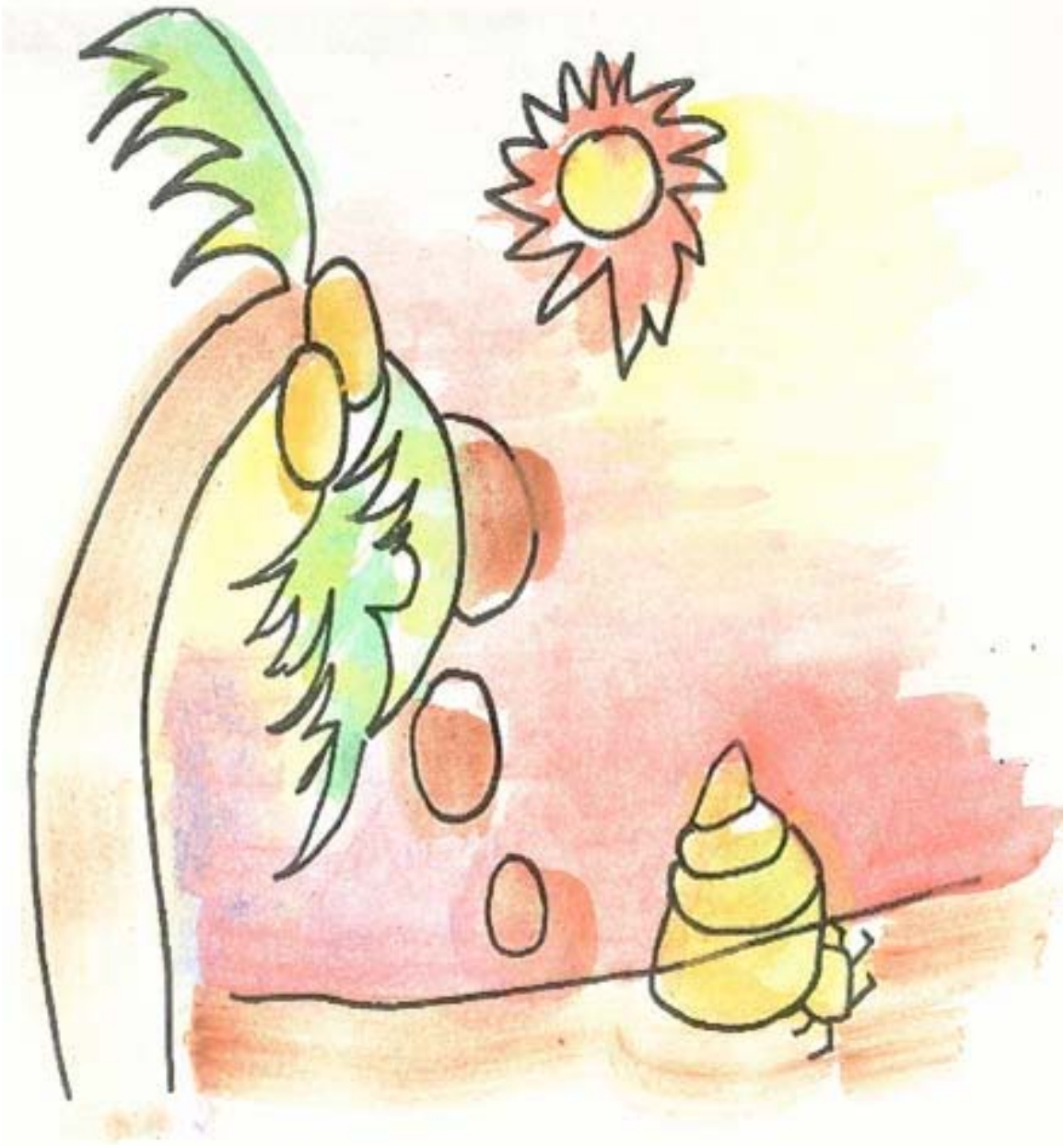
Sa toe sau i fafo le Uga ma tolotolo atu i le pito o le matafaga. Sa ia iloa ai galu tetele.

Uga, va'ai fa'alelei!



Ina ua pa'i mai le galu i le matafaga sa tamo'e vave le Uga
i le pu oneone.

Ua sefe le Uga.



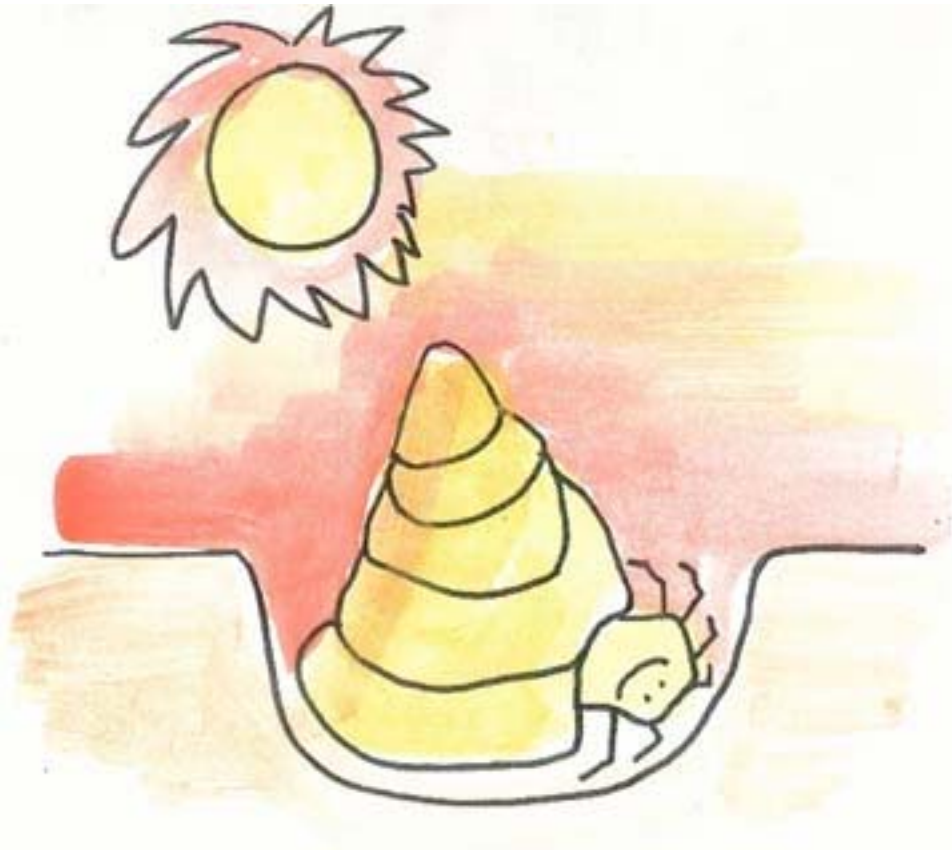
Sa toe sau i fafo o le pu le uga ma tolotolo i le matafaga.
Sa ia le iloa le popo 'ena'ena o le'a pa'u ifo.

Uga, va'ai fa'alelei!



Ina ua pa'u i le 'ele'ele le popo sa tamo'e vave le Uga i le pu oneone.

Ua sefe le Uga.



Ua umi le aso mo Uga. E le'i leva 'ae maua loa le pu e alu ese mai ai Uga ma puapuaga. Mo le taimi nei o lo'o saogalemu o ia i totonu o le pu oneone la'itiiti i le matafaga.

We would like to thank the following people for their assistance in developing this set of early reading materials.

Acknowledgements

Samoan

Translated by: Patricia Sataua

Reviewed by: Turituri Turituri, Taito Ausage, and Mata'u Auvasa

English

Author: Lee Noto

Illustrator: Lori Phillips



Pacific Resources for Education and Learning

900 Fort Street Mall Suite 1300 Honolulu, Hawaii 96813

Phone: (808) 441-1300 Fax: (808) 441-1385

U.S. Toll-free Phone: (800) 377-4773

U.S. Toll-free Fax: (888) 512-7599

Email: askprel@prel.org Website: www.prel.org

Building Capacity Through Education

This product was funded by the U.S. Department of Education (U.S. ED) under the Regional Educational Laboratory program, award number ED01CO0014. The content does not necessarily reflect the views of the U.S. ED or any other agency of the U.S. government.

© copyright PREL 2006